



Zabrik e.V. / M.A.U. Club
Warnowufer 56
18057 Rostock

Venue specs M.A.U. Club

Contact

Executive Secretary	Hannes Schade	+49 176 70342549	hannes.schade@maclub.de
Booker	Thomas Fanter	+49 176 66629598	booking@maclub.de
House Technician	Stefan Foth	+49 173 9167198	stefan@maclub.de

Clubsize

capacity: 800
with seating: 200

Stage

permanently installed
outline attached

Loading ways

using 1 stairway: ca. 15m
using the ramp without stairs: ca. 50m

Backstage

2 rooms (each 16m²)
2 bath rooms

Power for nightliner

2x CEE 32A
1x Schuko 16A

Technical specifications

Power Supply

Upstage right:

1x 16A CEE

1x 32A CEE

1x 64A CEE

Sub-distribution:

1x CEE 63A sub-distributor

→ 1x CEE 32A

→ 2x CEE 16A

→ 4x 16A Schuko

PA system

Tops: 4x L'acoustics ARCS II (2 per side)

Outfill: 2x L'acoustics ARCS II (1 per side)

Subs: 4x L'acoustics SB28 (2 per side)

Delay: 2x Kling & Freitag CA 1215-9 (12" and 1,5")

Amps: 2x L'acoustics LA8 with AES/EBU card for tops and subs
1x QSC RMX 2450 for delay (controlled by dbx driverack)

Monitoring

Wedges: 6x GAE PS 4475 M (15", 1")
7x L'acoustics X12

Subs: 2x LD Systems LDP Sub15 (1x 15")
1x L'acoustics SB 15m

Amps: 2x Camco DL 1500 C-P
2x QSC RMX 2450
2x L'acoustics LA 4X

FoH Sound

Analog

Multicore: Connex 40/8 Stagebox with 100m 40/8 Multicore and 5m 32 Ch. Monitorsplit
Zeck 24/8 Stagebox with 30m 24/8 Multicore

Digital

Desk: Behringer X 32 with Apple Airport Express Router

Multicore: 2x Behringer S16 Stagebox with 30m Cat5 Cable

Microphones

1x Shure Beta 91

1x Shure Beta 52

1x AKG D 112

1x AKG D 22

5x Shure SM 57

6x Sennheiser e604

2x Sennheiser K6 / ME 64

2x Sennheiser e606

6x Shure SM 58

3x Palmer PAN 04 Stereo DI Box passive

6x Palmer PAN 02 Mono DI Box active

Stands

3x long, straight, round base

1x short, boom, round base

7x short, boom

13x long, boom

Lightsystem

Fronttruss: 7x Par 64 long MFL 500W
4x Fresnel ADJ Encore FRI502
3x 2Lite active Blinder

Sidetrusses: 8x Par 64 long VN5P 500W

Backtruss: 12x Par 64 long VN5P 500W
6x Par 56 short NSP 300W
6x Par 56 long NSP (on back towers) 300W
8x Par 36 short (28V/100W) as ACL Group
4x Showtec Infinity IS-200

Floor: 4x Par 64 short VN5P 500W
2x Par 64 short MFL 500W

Dancefloor: 4x Martin Roboscan 518 Pro

Dimmers: 1x Datapack 12x10A
1x Botex DMD 12 JR 12x10A
1x Botex DPX 620 6x10A

Fog: 1x Hazebase BaseClassic

Strobes: 2x Varytec Strobe Xenon 3000 DMX

LED Floor: 6x Futurelight Pro Slim PAR-12 MK2 HCL

FoH Light

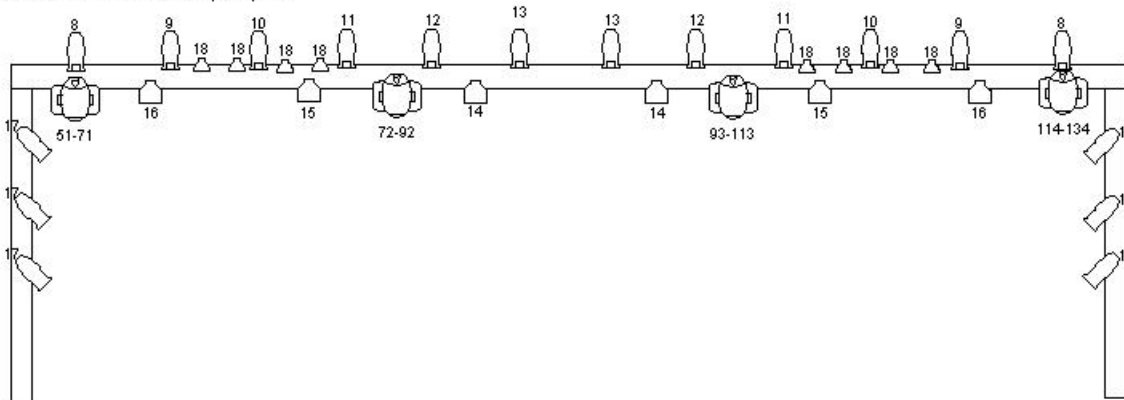
Desks: MA Lightcommander 24/6
Strand Lighting ML500

DMX: 2 Lines XLR 5 Pin from FoH to stage
1 Line XLR 3 Pin from FoH to stage



Light Plot

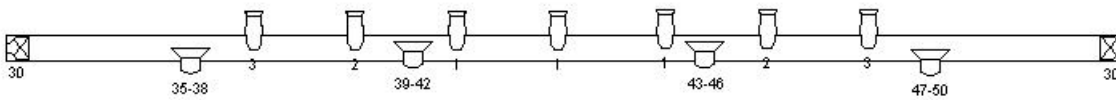
Backtruss + Tower Frontprospect



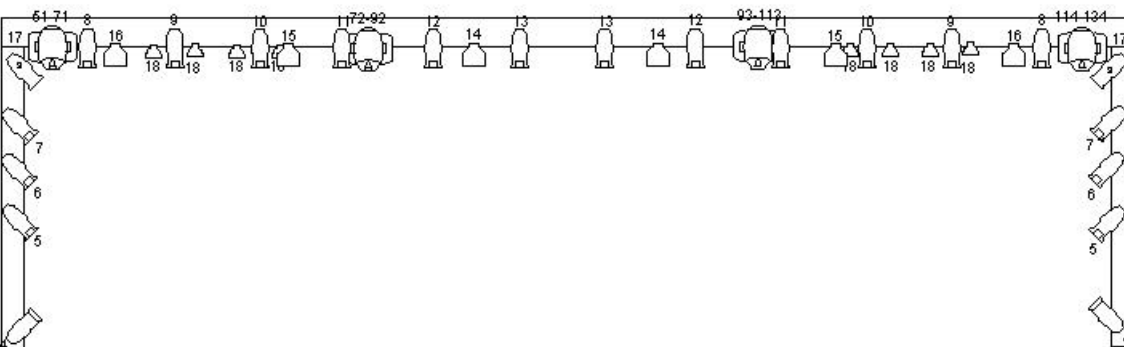
Fronttruss 1 Frontprospect



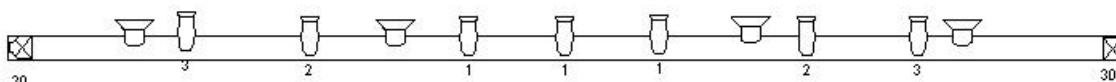
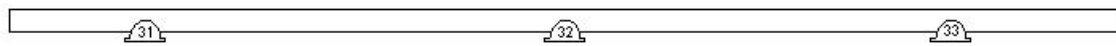
Fronttruss 2 Frontprospect



Backtruss+ Sidetruss Bird's-eye view



Fronttrusses Bird's-eye view



- PAR-56 Long 300W/NSP
 ACL PAR-36 250W/NSP
 PAR-64 Long 500W/WFL
 1... 512 Channel
- PAR-56 Short 300W/NSP
 Truss-Deco
 PAR-64 Long 500W/NSP
 Martin Roboscan 518
- Two Lite Blinder
 ADJ Encore FRI502 Fresnel

Stage

New front edge of stage are permanently installed. $4,6\text{m} + 0,8\text{m} = \underline{5,4\text{m}}$

